

HOSPITAL-ACQUIRED PRESSURE INJURIES

Help minimize them with the right stretcher mattress

Boarding times for patients in the emergency department vary greatly, and some can be on stretchers for many hours¹ before they get moved to a room. Considering that pressure injuries can occur in as little as two hours, individuals who access care through the emergency department require early intervention to identify risk for pressure injury prevention. To reduce damage to soft tissue, select a support surface to immerse and envelop the patient's body.

2.5 MILLION PATIENTS

per year develop a hospital-acquired pressure injury (HAPI)³



Patients with HAPIs have a median excess length of stay of 4.31 days³

60,000 PATIENTS DIE

every year as a direct result of pressure injuries³



Patients with HAPIs have higher 30-day readmission rates (22.6% vs. 17.6%)³

\$11 BILLION

is the annual estimated cost of HAPIs³

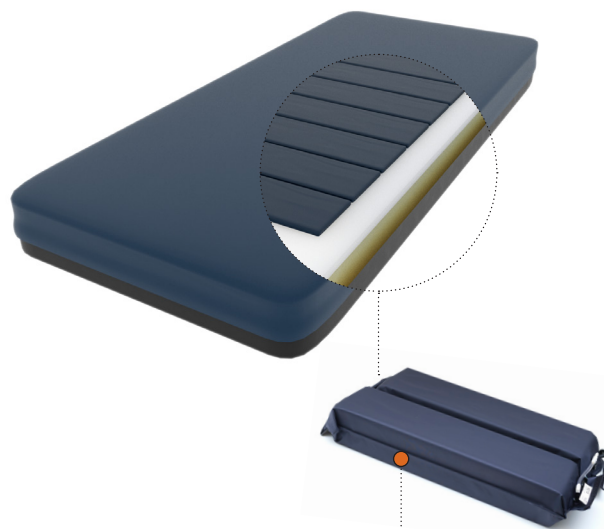
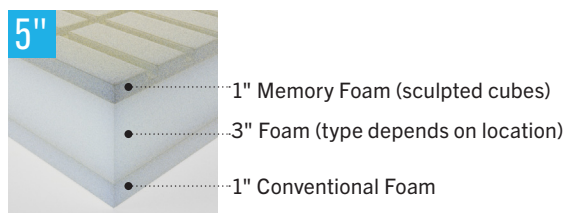


HAPI rates are increasing while all other hospital acquired conditions are decreasing³

CURBELL CAN HELP

Our Reactive Air stretcher mattresses offer both a high level of comfort as well as additional protection against skin breakdown.

Inside are a series of interconnected air cells that deliver dynamic response to patient movement without electricity or loud motors.



Two of the internal air cells underneath the top layer of foam

1. Davis, Jeffrey. "Emergency Department 'Boarding' at Seemingly All-Time High Levels." American College of Emergency Physicians, August 26, 2021.

<https://www.acep.org/federal-advocacy/federal-advocacy-overview/regs--eggs/regs--eggs-articles/regs--eggs---august-26-2021>

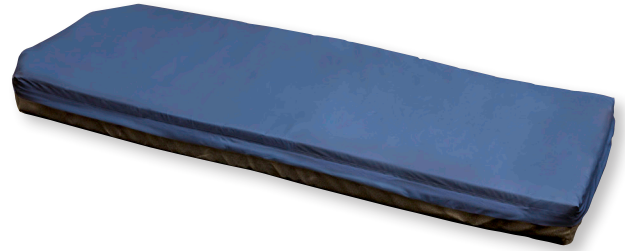
2. <https://jamanetwork.com/journals/jama/fullarticle/203224>

3. "NPIAP Fact Sheet." National Pressure Injury Advisory Panel, November 8, 2019.

CURBELL'S REACTIVE AIR SOLUTION

Enjoy the benefits of gel at half the cost

If you're looking to minimize pressure injuries in the emergency department, consider Curbell's Reactive Air stretcher mattresses. They provide the same patient comfort, patient safety, and durability as a typical gel mattress at about half the price.





	Curbell's Reactive Air Mattress	Typical Gel Mattress
Manages pressure, shear, and microclimate imbalance (contributors to skin breakdown)	Yes	Yes
Assists prevention and treatment of pressure injury	Yes	Yes
Fire rated	Yes	Yes
Built to the S3I Standard	Yes	Yes
Warranty	3 years	3 years
Price	\$	\$\$

TESTING

Pressure mapping was once the ideal tool to help design mattresses for pressure injury prevention. Then, the Support Surface Standards Initiative (S3I) brought about a new, more precise standard which measures immersion, envelopment, and microclimate. Our Reactive Air stretcher mattresses were designed, built, and tested to meet these new industry standards.

CURBELL'S REACTIVE AIR STRETCHER MATTRESS FEATURES

-  WATERFALL ZIPPER FLAP
-  RF WELDED SEAMS
-  MADE IN THE USA
-  PERFECT FIT
-  MULTI-DIRECTIONAL STRETCH
-  SLOPED HEEL SECTION
-  POLYCARBONATE FABRIC
-  THREE YEAR WARRANTY
-  MEMORY FOAM
-  HOOK AND LOOP FASTENER
-  FIRE SAFETY
-  HIGH-TACK BOTTOM COVER
-  360° ZIPPER
-  THOROUGH TESTING
-  INTERCONNECTED AIR CELLS

Width	Length	Thickness	Tapers	Patient Weight Limit	FULL MATTRESS	JUST THE COVER
					Part Number	Part Number
26"	76"	5"	2		27283	27294
30"	76"	5"	2		27284	27297

These mattresses can be used on standard and big wheel stretchers. Polyurethane and four tapered corners are also available — call for pricing.